

R-Motion®

PRODUCT PRESENTATION

Sales training support – for internal use only





R-Motion® – Product Presentation

INTRODUCTION

THE SAFEST. SIMPLY.

Smooth to use, minimally invasive.

Why choose anything else?

To become a true full solution provider of instrument systems and strengthen our global position in the market, we have developed a reciprocating motion system able to meet all market demands in this segment. By leveraging our technical and clinical know-how, we have pushed today's standards in reciprocation to the next level, making **R-Motion®**, not only the safest reciprocating system, but also easy to use and far less invasive than competitor's systems.

Highlights:

- **R-Motion®** includes a range of files to meet the needs of every case
- **R-Motion®** are heat treated Nickel-Titanium reciprocating instruments and compatible with endo motors offering a reciprocating (counterclockwise) mode
- **R-Motion®** instruments are intended to be safe, smooth to use and minimally invasive



R-Motion® – Product Presentation

DESCRIPTION – Promotional video



R-Motion® – Product Presentation

DESCRIPTION – Reciprocation motion

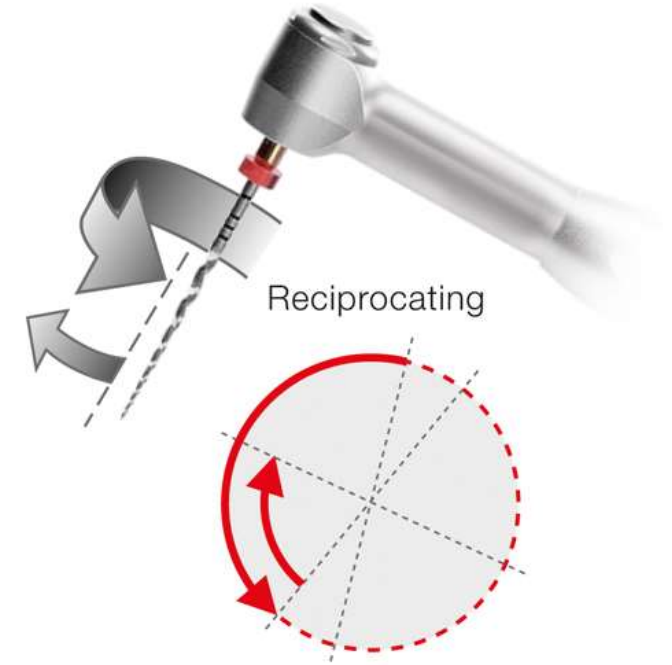
- Reciprocation has been gaining traction over the last years and represents today a significant part of the global endodontic market.

What does it mean: **reciprocating motion**?

- Balanced Force Technique, Pr. James Roane (1985)
- Oscillating movement of an instrument which, before making a complete turn, reverses its direction for a short time



- Increases the resistance to cyclic fatigue of NiTi instruments



Waveone_gold_reciprocating_motion. (s. d.). [Illustration].
https://assets.dentsplysirona.com/master/product-procedure-brand-categories/endodontics/product-categories/endodontic-equipment/motors-and-contrangles/motors/promark/images/Waveone_gold_reciprocating_motion.png.

R-Motion® – Product Presentation

DESCRIPTION – Main advantages



GREATER RESISTANCE TO CYCLIC FATIGUE

R-Motion® instruments have a high resistance to cyclic fatigue through our proprietary heat treatment. Higher cyclic fatigue resistance is known to reduce the risk of instrument fracture, hence improving patient safety.



LOWER SCREWING EFFECT

R-Motion® is designed to reduce the screwing effect, allowing the clinician to have a better control of the progression in the canal.



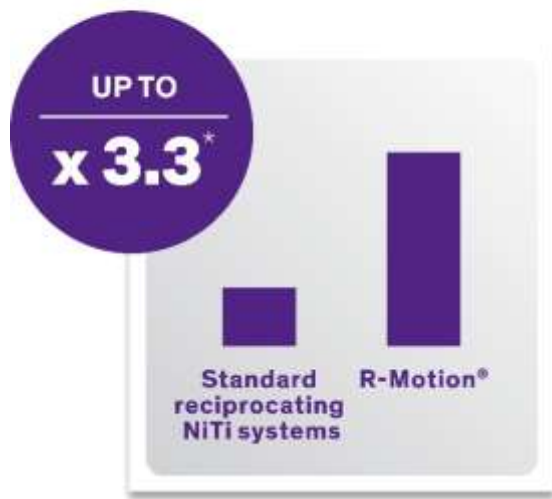
* Based on internal laboratory results compared with equivalent competitors' instruments.

R-Motion® – Product Presentation

DESCRIPTION – Main advantages

HIGHER FLEXIBILITY

Thanks to an exclusive heat treatment process, recognisable by the blue colour of the instrument, R-Motion® offers improved flexibility enabling clinicians to treat a wide range of canal anatomies.



* Based on internal laboratory results compared with equivalent competitors' instruments.



LOWER STRESS ON DENTINE

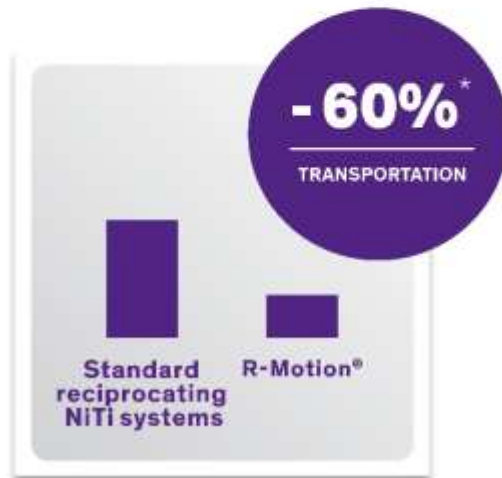
The exclusive R-Motion® design and thinner core size significantly reduce the stress on dentine during root canal treatment.



R-Motion® – Product Presentation

DESCRIPTION – Main advantages

BETTER RESPECT OF THE CANAL ANATOMY

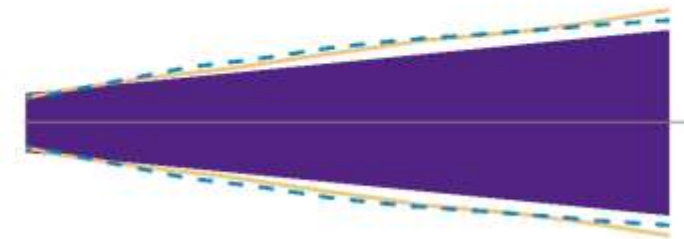


* Based on internal laboratory results compared with equivalent competitors' instruments.



R-Motion®'s increased flexibility and design allows for better centring ability and respect of the canal anatomy.

The thinner core sizes of R-Motion® instruments are less invasive than equivalent competitors' files, diminishing the risk of excessive dentine removal and minimizing the impact on non-infected areas.



■ R-Motion 30 — Standard reciprocating NiTi systems

R-Motion® – Product Presentation

DESCRIPTION – Main advantages

GLIDE PATH FILES

R-Motion Glider



R-Motion Glider C



SHAPING FILES

R-Motion 20



R-Motion 25



R-Motion 30



R-Motion 40



R-Motion 50



SIMPLE

Thanks to the agile design of our files, a sequence of two instruments is sufficient in most cases. Simplicity itself.

ONE SEQUENCE TO FIT MOST CASES

GLIDE PATH

SHAPING

R-Motion Glider



R-Motion 25



Choose your shaping file according to your therapeutic approach

R-Motion 30

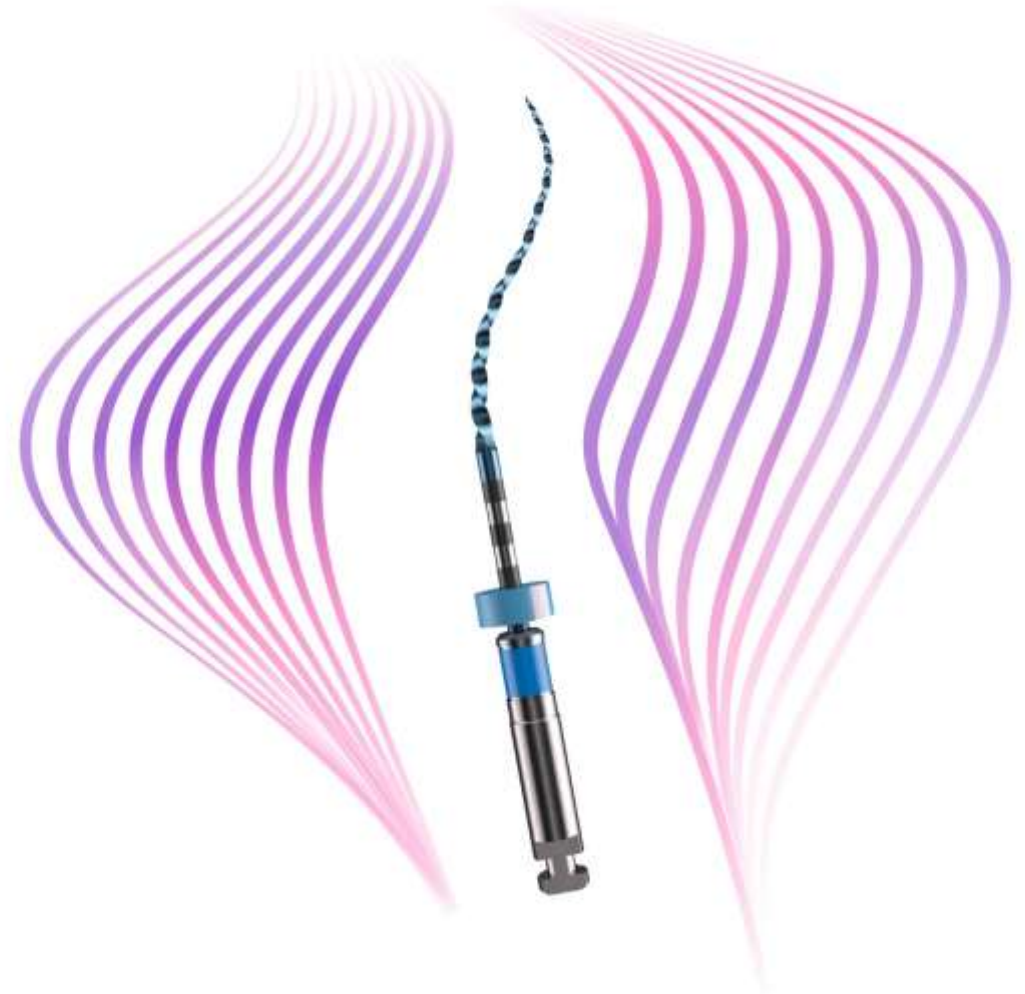


R-Motion® – Product Presentation

FEATURES - Summary

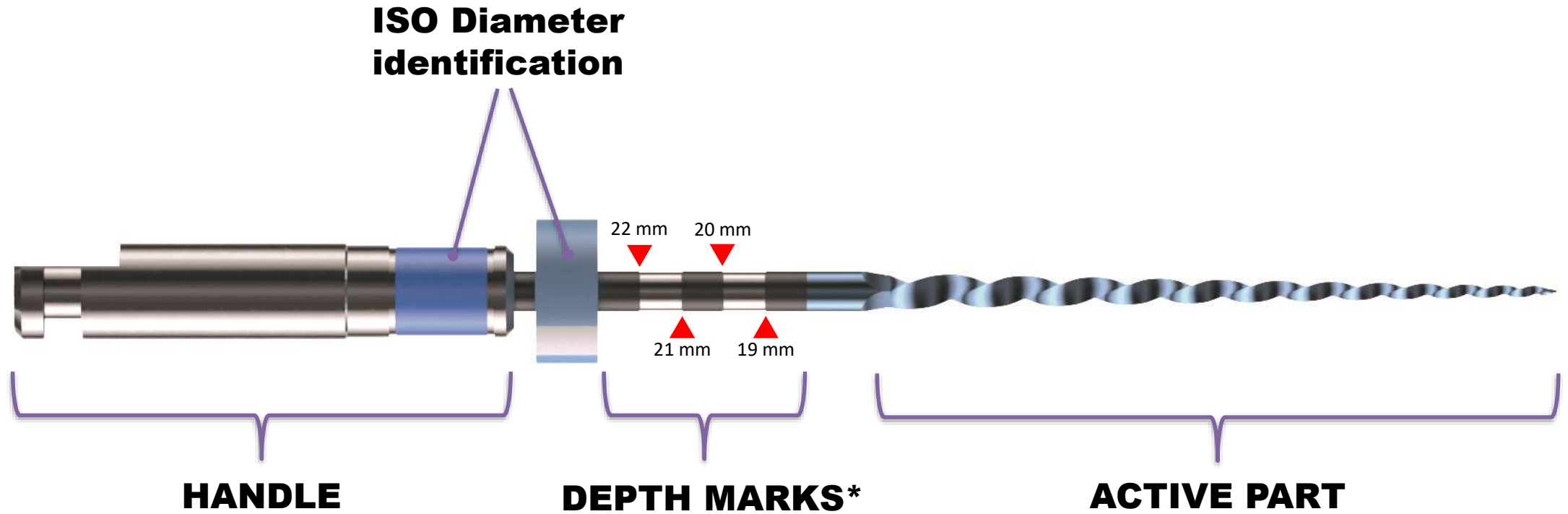
► FEATURES

- New identification (only ISO color)
- Light alternating cutting edges
- Rounded triangular cross-section
- Optimized reciprocation tip
- Electrochemical polishing
- Heat treatment



R-Motion® – Product Presentation

FEATURES – Coding & Details

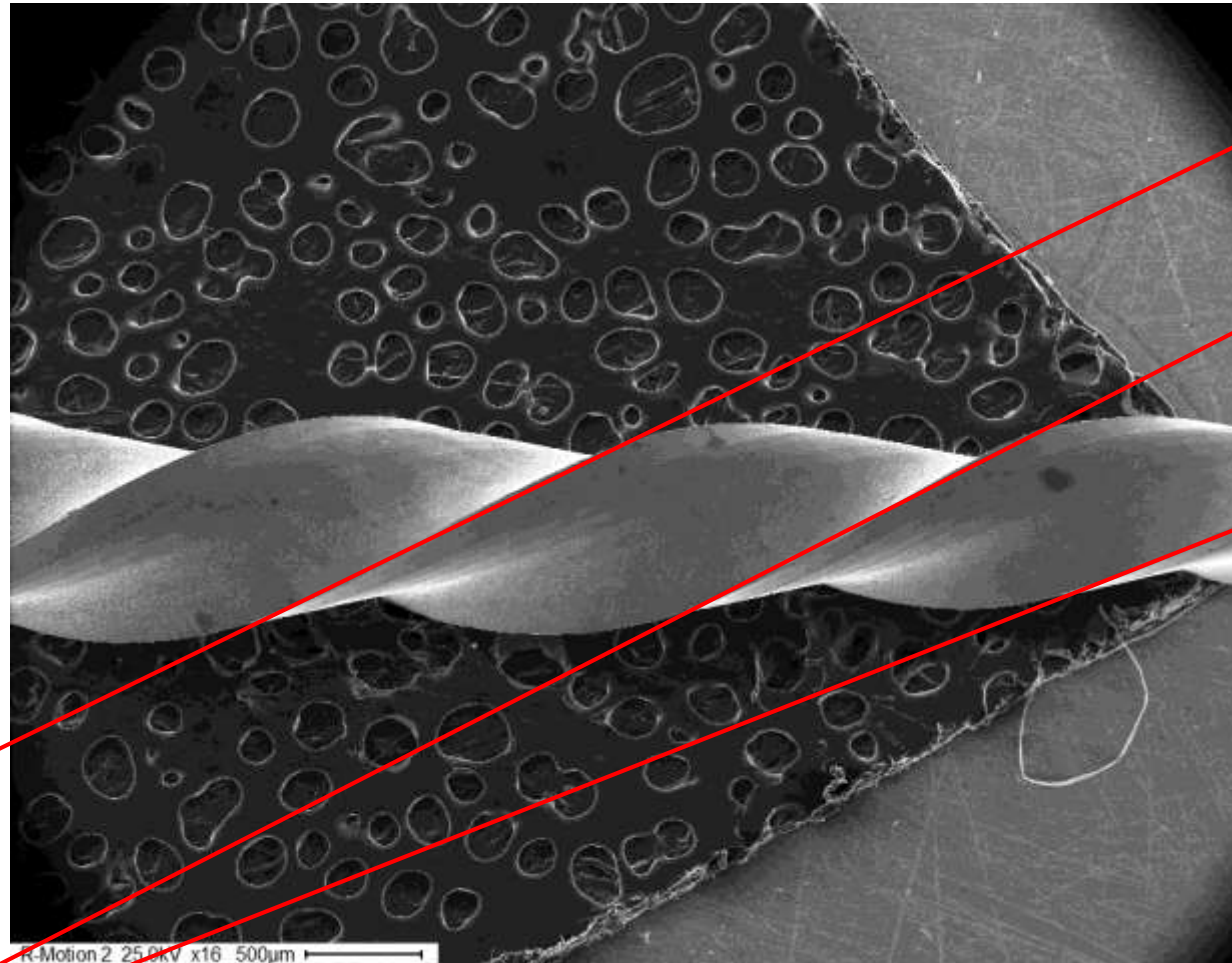


**Example on 25 / 31 mm instruments*

R-Motion® – Product Presentation

FEATURES - Light alternating cutting edges

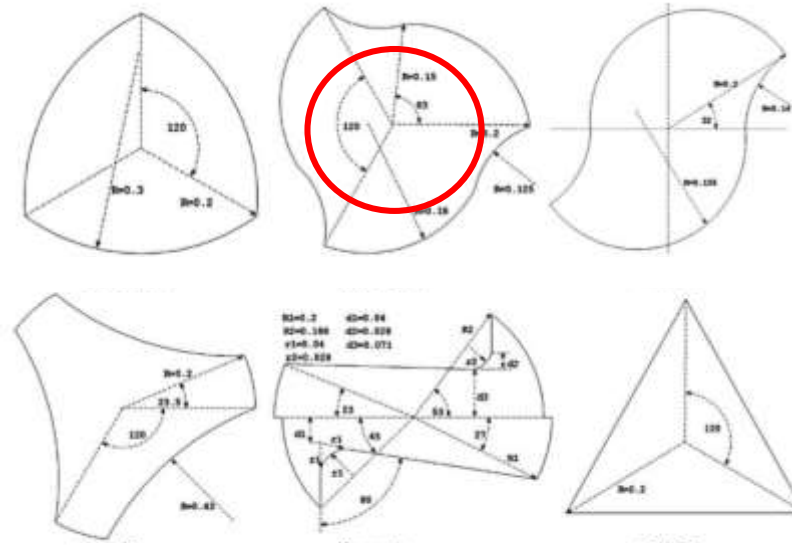
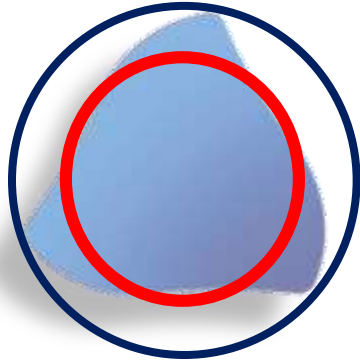
- Light alternating cutting edges



© Dr. Ana Laura Resa (Argentina), All rights reserved

R-Motion® – Product Presentation

FEATURES - Rounded triangular cross-section



Basic Research—Technology

Comparative Study of Torsional and Bending Properties for Six Models of Nickel-Titanium Root Canal Instruments with Different Cross-Sections

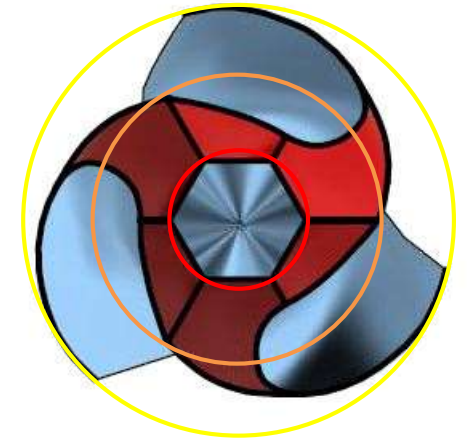
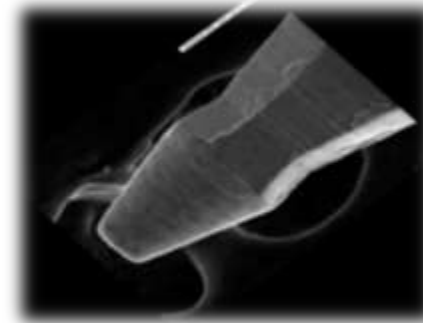
Xuejun Xu, M. Eng, Yufeng Zbeng, and D. Eng

Based on the findings of this analysis, the following conclusions may be drawn. Of all the models, the models with convex and triple helix section are more torque-resistant. The models with triangular and Z-type sections are poor to tolerate torque. The S-type and Z-type sections are asymmetrical and have unequal inertia about the x and the y-axes. The cross-section profile has significant influence on the mechanical behaviors of NiTi root canal files. The factors affecting the performance include the cross-sectional inertia, depth of the flute, area of the inner core, radial land and peripheral surface ground. Sharp variance in

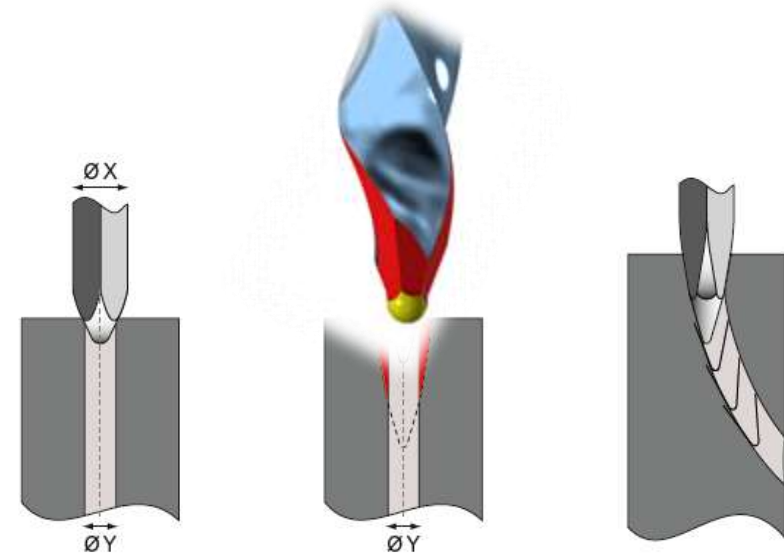
R-Motion® – Product Presentation

FEATURES - Optimized reciprocation tip

- ▶ Less risk of perforations and ledges
- ▶ Precise guidance and centering of instruments
- ▶ Respects the root canal anatomy and shape
- ▶ Higher cutting efficiency
- ▶ Removes an increased amount of material with each cut
- ▶ Quickly achieves a size considerably larger than the starting diameter
- ▶ Its revolutionary shape enables an easy instrumentation of a one file system in particular thanks to a progressive diameter, smaller than the ISO size of the file



© Dr. Ana Laura Resa (Argentina), All rights reserved

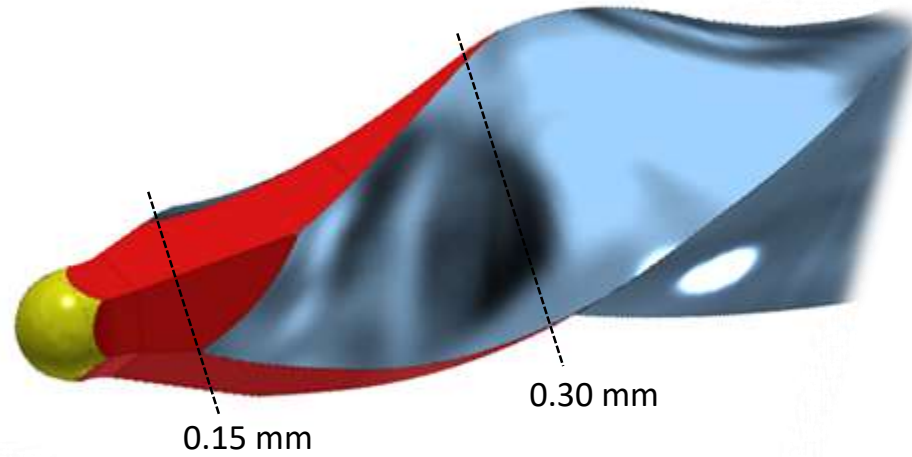




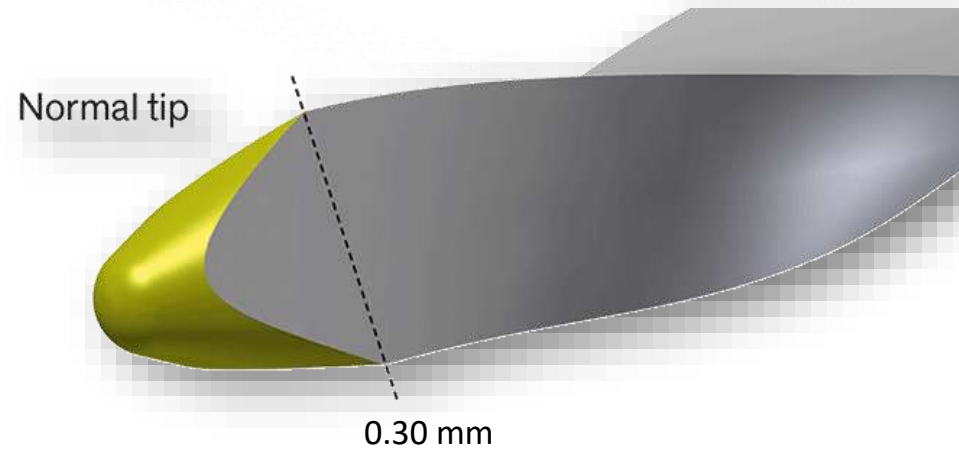
R-Motion® – Product Presentation

FEATURES - Optimized reciprocation tip

Optimized tip



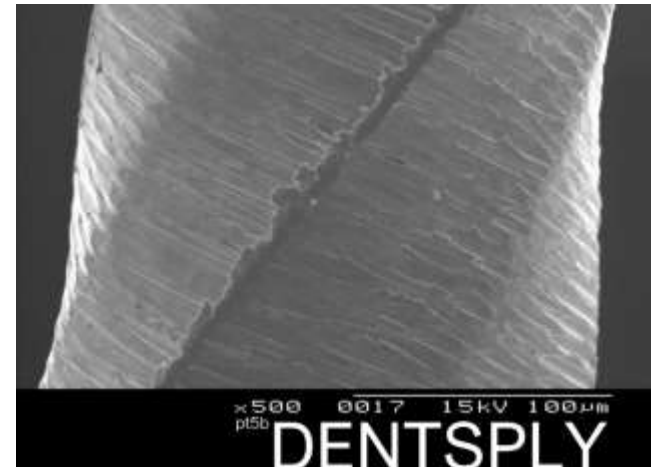
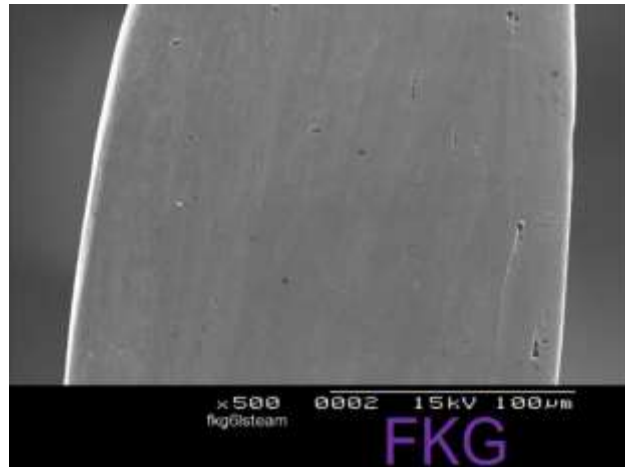
Round Tip



R-Motion® – Product Presentation

FEATURES – Electrochemical polishing

- ▶ Enhanced resistance against fatigue and corrosion
- ▶ Ease of cleaning and disinfection
- ▶ The treatment eliminates surface imperfections, reducing drastically the risk of weak points (micro-cracks)
- ▶ The resulting shiny surface allows better cleaning and disinfection, improving the sterilization process





R-Motion® – Product Presentation

FEATURES - Demonstration of phases related to a heat-treated NiTi instrument

Room
temperature

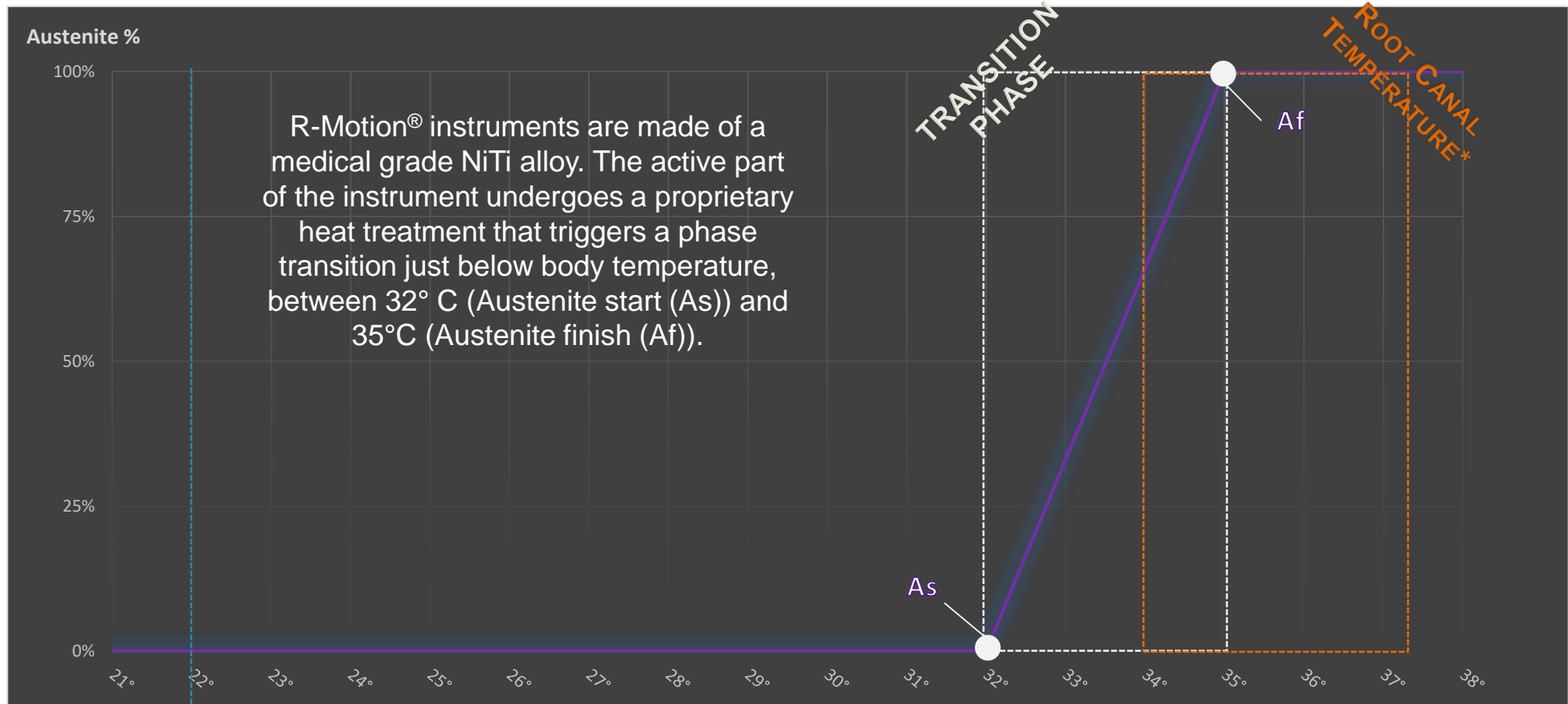


Root Canal
Temperature



R-Motion® – Product Presentation

FEATURES – Heat treatment



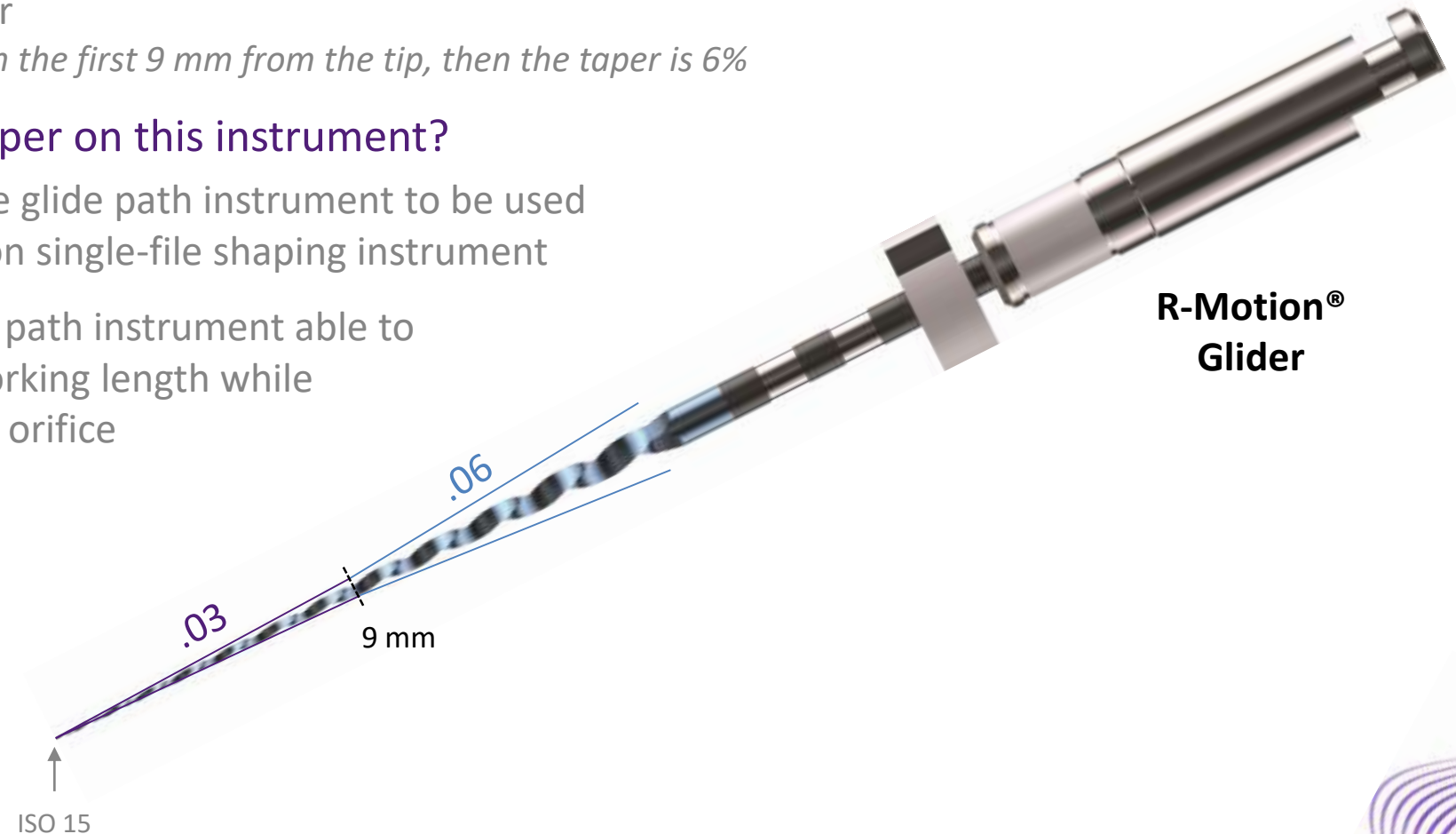
*Root canal temperature may vary depending on various variable elements (patient, irrigant temperature, clinician procedure,...)

Caiado, Ana Carolina Rocha Lima et al. "In Vivo Measurement of Root Canal Wall Temperature at Different Stages Prior to Fiber Post Cementation." *European journal of dentistry* vol. 13,1 (2019): 69-74. doi:10.1055/s-0039-1688539

R-Motion® – Product Presentation

FEATURES – R-Motion Glider

- ▶ Specific feature of the R-Motion® Glider
 - A variable taper
 - The taper is 3% in the first 9 mm from the tip, then the taper is 6%*
- ▶ Why a variable taper on this instrument?
 - To offer a single glide path instrument to be used before R-Motion single-file shaping instrument
 - To offer a glide path instrument able to easily reach working length while widening canal orifice



**R-Motion®
Glider**

R-Motion® – Product Presentation

FEATURES – R-Motion Glider C

► Specific feature of the R-Motion® Glider C

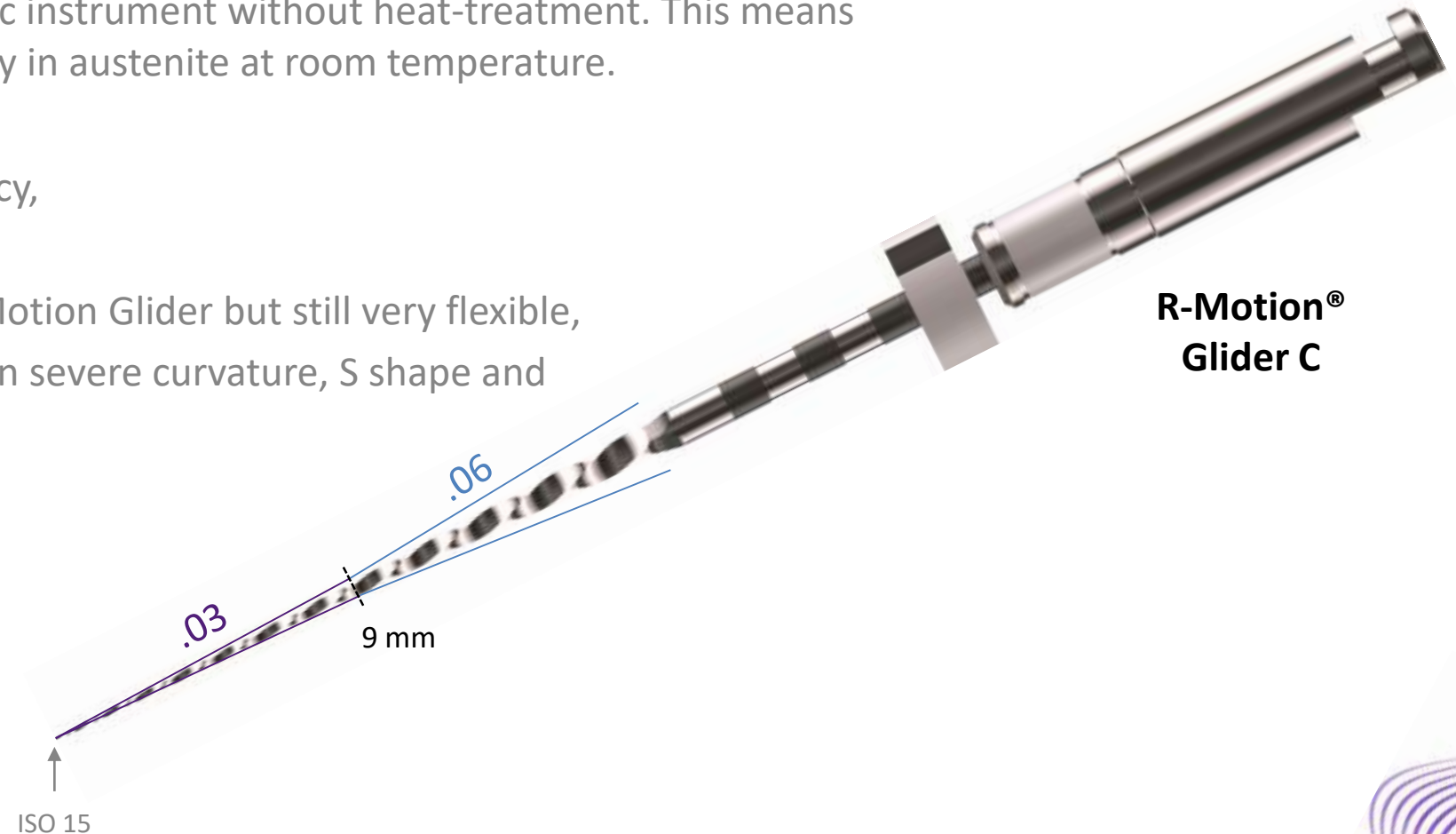
- 100% Austenitic instrument without heat-treatment. This means that it is already in austenite at room temperature.

Strengths:

- Cutting efficiency,
- Safe,
- Stiffer than R-Motion Glider but still very flexible,
- Could be used in severe curvature, S shape and calcified canals.

Weakness:

- Pre-bending



R-Motion® – Product Presentation

PRODUCT RANGE – Part 1

► RANGE

➤ 2 glide path files

- R-Motion Glider
- R-Motion Glider C



➤ 5 shaping files

- R-Motion 20
- R-Motion 25
- R-Motion 30
- R-Motion 40
- R-Motion 50










► Single use files



► Compatible with endo motors offering a reciprocating (counterclockwise) mode

R-Motion® – Product Presentation

PRODUCT RANGE – Part 2

GLIDE PATH FILE		SHAPING FILE SELECTION*				
		Narrow canal	Standard canal (most cases)		Medium canal	Large canal
R-Motion Glider	R-Motion Glider C	R-Motion 20	R-Motion 25	R-Motion 30	R-Motion 40	R-Motion 50
						
15/.03v	15/.03v	20/.04	25/.06	30/.04	40/.04	50/.04
up to WL		up to WL	up to WL		up to WL	up to WL
<p>Use of the R-Motion Glider C is recommended for canals which require an instrument with more rigidity, and/or if the R-Motion Glider is no longer progressing and can not reach the working length.</p>		<p>Select the final shaping file depending on your own therapeutic approach.</p>				

* Select the R-Motion single-file shaping instrument which is best suited to the anatomy of the canal being treated. If the radiographs do not allow you to clearly identify the anatomy of the canal, it can be gauged using hand files.

R-Motion® – Product Presentation

PRODUCT RANGE – Part 3

1ST CLINICAL USE

Most of times, the R-Motion 20 will be the ideal shaping instrument for root canal preparation of **NARROW/SMALL** canals

R-Motion 20

















2ND CLINICAL USE

Sometimes, in difficult scenarios or in particularly complex cases, the R-Motion 20 could be used as **AN INTERMEDIATE FILE** between R-Motion Glider files and R-Motion 25 or R-Motion 30 shaping file



R-Motion® – Product Presentation

COMPETITORS – Main competitors summary

VDW	VDW	Dentsply Sirona	Dentsply Sirona	FKG Dentaire	
					
		21/.06	20/.07	20/.04	Narrow
25/.08	25/.08	25/.08	25/.07	25/.06	Standard Apical Cone Preparation
				30/.04	Standard Apical Box Preparation
40/.06	40/.06	40/.08	35/.06	40/.04	Medium
50/.05	50/.05		45/.05	50/.04	Large
CANAL ANATOMY					
					Standard
					Calcified
					

R-Motion® – Product Presentation

REMINDER - Benefits Allowed by the Features

FEATURES	BENEFITS
Identification	<ul style="list-style-type: none"> • Easy identification and distinction from a continuously rotating instrument
Taper sizes	<ul style="list-style-type: none"> • Minimally invasive
Light alternating cutting edges	<ul style="list-style-type: none"> • Low screwing effect and better control
Rounded triangular cross section	<ul style="list-style-type: none"> • High cutting efficiency • Higher flexibility due to small core • More space for debris removal • Only one cutting direction adapted to reciprocation mode
Optimized reciprocation tip	<ul style="list-style-type: none"> • Less risk of perforations and ledges • Precise guidance and centering of instruments • Respects the root canal anatomy and shape • Higher cutting efficiency • Removes an increased amount of material with each cut • Quickly achieves a size considerably larger than the starting diameter • Easy one file system instrumentation notably due to a diameter smaller and progressive than ISO size
Electrochemical polishing	<ul style="list-style-type: none"> • Enhanced resistance against fatigue and corrosion • Ease of cleaning and disinfection • Elimination of surface imperfections, reducing drastically the risk of weak points (micro-cracks)
Heat treatment	<ul style="list-style-type: none"> • Pre-bending • More resistance to cyclic fatigue (vs. WaveOne Gold & Reciproc Blue*) • Longer time to fracture (vs. WaveOne Gold & Reciproc Blue*) • Safer (instrument warns by deforming before fracturing) • More flexibility (vs. WaveOne Gold & Reciproc Blue*) • Lower transportation effect (vs. WaveOne Gold & Reciproc Blue*)

R-Motion® – Product Presentation

How to perform canals preparation featuring the single-file shaping instrument R-Motion 30

R-Motion® TUTORIAL VIDEO



R-Motion® – Product Presentation

CLINICAL CASE – R-Motion Glider & R-Motion 30

#46 (First lower right molar – FDI numbering system)



Pre-op radiograph

Narrow canals. Curvature in mesial canals and slightly S-shaped distal canal.

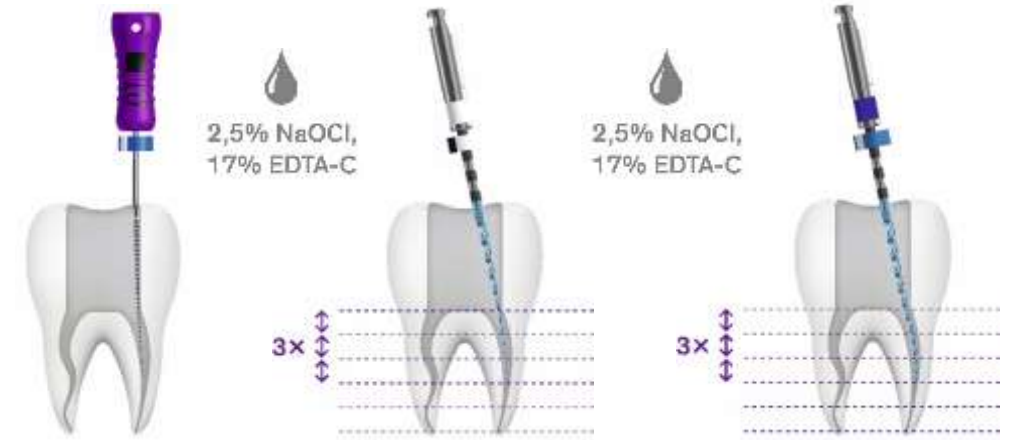


Post-op radiograph

Minimal shaping with the original shape of the canals preserved. Note also the straight-line access in the access cavity.

© Dr. Kenneth Jordy (Denmark), All rights reserved

PROTOCOL USED



Filling system

TotalFill BC Points & TotalFill BC Sealer

“This case illustrates that R-Motion® works perfectly in narrow and curved canals, preserving dentine and the original shape of the canals.”

KENNETH JORDY
DDSc / Copenhagen Denmark



R-Motion®

PURCHASE ORDER INFORMATION/REQUIREMENTS

R-Motion® – Purchase Order Information/Requirements

References

RECIPROCATING GLIDE PATH FILES



R-Motion Glider – 15/.03 variable taper

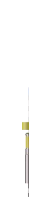
3x	21mm	S1.7B0.00.0GM.FK
3x	25mm	S1.7B0.00.0GN.FK
3x	31mm	S1.7B0.00.0GO.FK



R-Motion Glider C – 15/.03 variable taper

3x	21mm	S1.7B0.00.0HT.FK
3x	25mm	S1.7B0.00.0HU.FK
3x	31mm	S1.7B0.00.0HV.FK

RECIPROCATATING SHAPING FILES



R-Motion 20 – 20/.04

3x	21mm	S1.7B0.00.0HQ.FK
3x	25mm	S1.7B0.00.0HR.FK
3x	31mm	S1.7B0.00.0HS.FK



R-Motion 25 – 25/.06

3x	21mm	S1.7B0.00.0FR.FK
3x	25mm	S1.7B0.00.0FS.FK
3x	31mm	S1.7B0.00.0FT.FK



R-Motion 30 – 30/.04

3x	21mm	S1.7B0.00.0FI.FK
3x	25mm	S1.7B0.00.0FL.FK
3x	31mm	S1.7B0.00.0FO.FK



R-Motion 40 – 40/.04

3x	21mm	S1.7B0.00.0FJ.FK
3x	25mm	S1.7B0.00.0FM.FK
3x	31mm	S1.7B0.00.0FP.FK



R-Motion 50 – 50/.04

3x	21mm	S1.7B0.00.0FK.FK
3x	25mm	S1.7B0.00.0FN.FK
3x	31mm	S1.7B0.00.0FQ.FK



R-Motion® – Purchase Order Information/Requirements

Availability & Supply Rules

AVAILABILITY

R-Motion® Refill: Sterile blister of 3 instruments

SUPPLY RULES

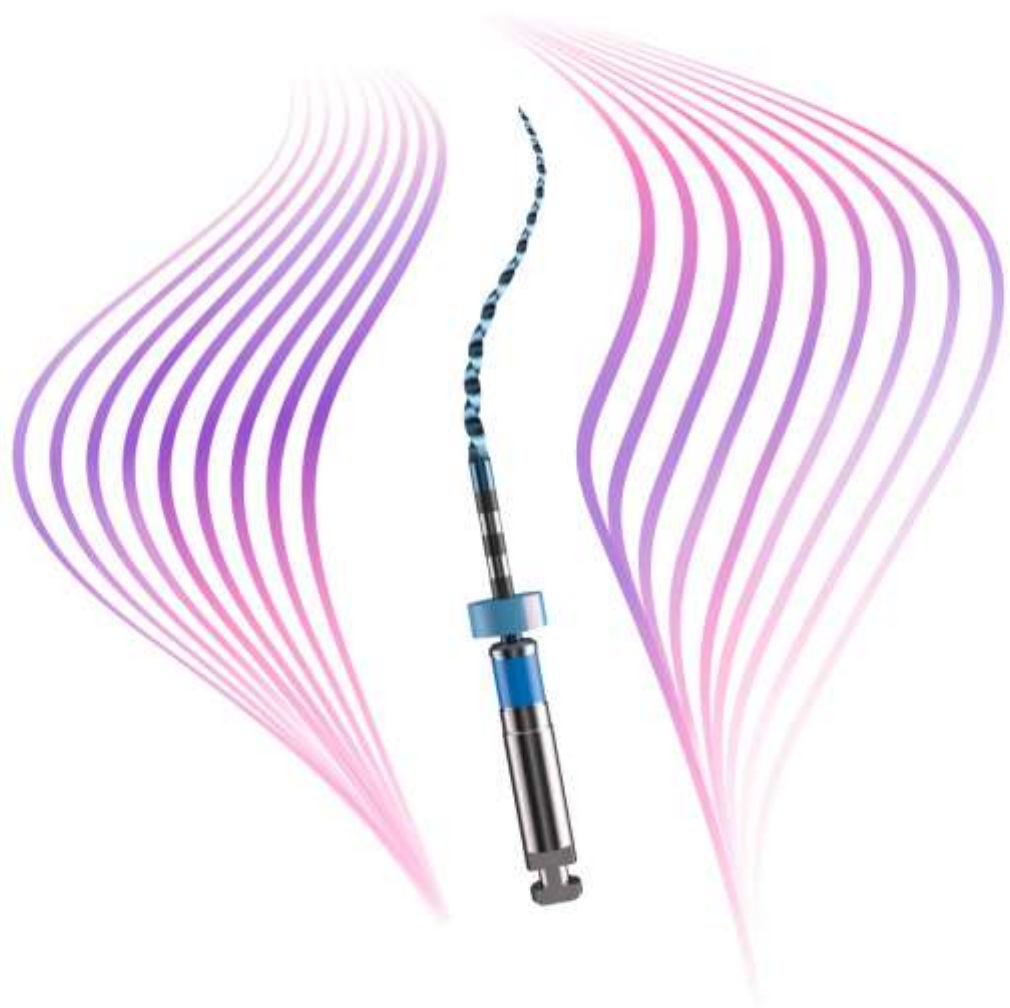
Minimum Order Quantity

- ▶ 10 blisters

Order in multiple of

- ▶ 10 units





R-Motion[®]

PRICING

R-Motion® – Pricing

RECIPROCATING GLIDE PATH FILES



R-Motion Glider – 15/.03 variable taper			PCO Price	Recommended Retail Price
3x	21mm	S1.7B0.00.0GM.FK	23.80 CHF	47.60 CHF
3x	25mm	S1.7B0.00.0GN.FK		
3x	31mm	S1.7B0.00.0GO.FK		



R-Motion Glider C – 15/.03 variable taper			PCO Price	Recommended Retail Price
3x	21mm	S1.7B0.00.0HT.FK	23.80 CHF	47.60 CHF
3x	25mm	S1.7B0.00.0HU.FK		
3x	31mm	S1.7B0.00.0HV.FK		

RECIPROCATATING SHAPING FILES



R-Motion 20 – 20/.04			PCO Price	Recommended Retail Price
3x	21mm	S1.7B0.00.0HQ.FK	23.80 CHF	47.60 CHF
3x	25mm	S1.7B0.00.0HR.FK		
3x	31mm	S1.7B0.00.0HS.FK		



R-Motion 25 – 25/.06			PCO Price	Recommended Retail Price
3x	21mm	S1.7B0.00.0FR.FK	23.80 CHF	47.60 CHF
3x	25mm	S1.7B0.00.0FS.FK		
3x	31mm	S1.7B0.00.0FT.FK		



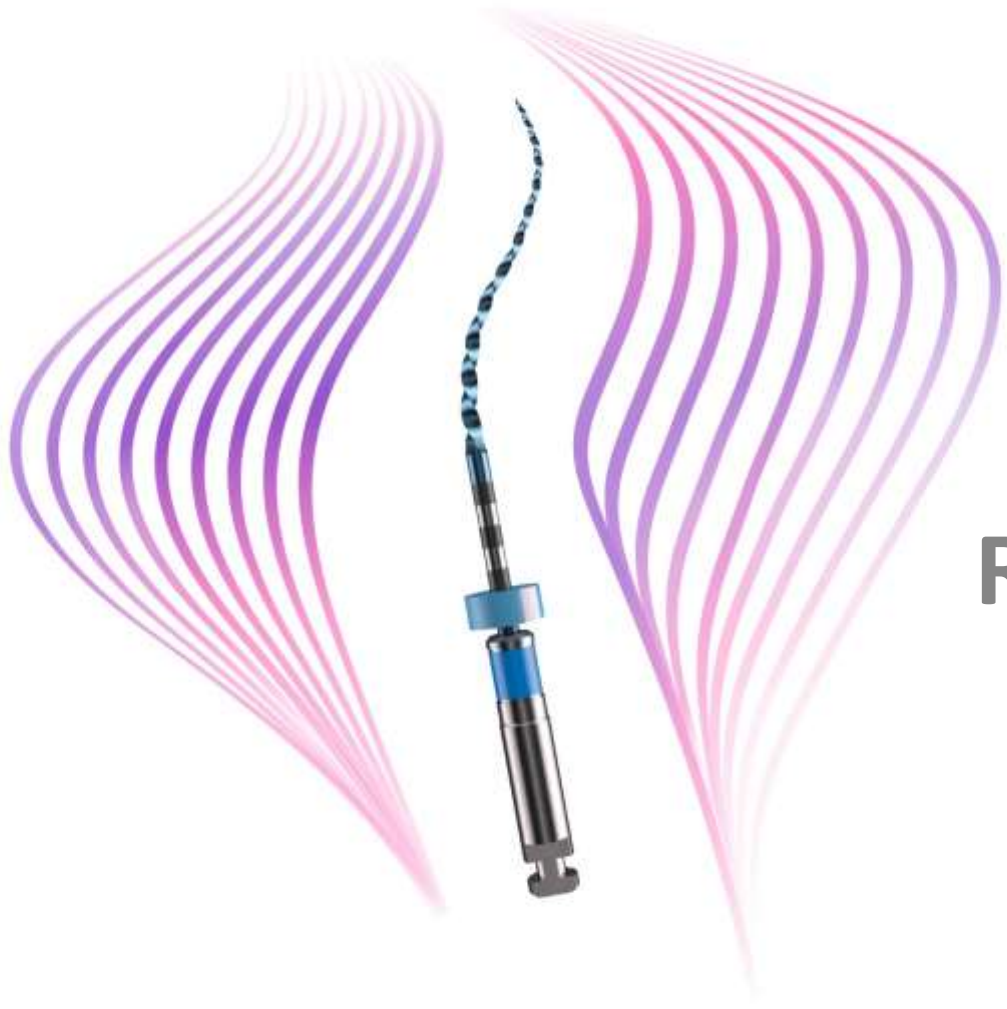
R-Motion 30 – 30/.04			PCO Price	Recommended Retail Price
3x	21mm	S1.7B0.00.0FI.FK	23.80 CHF	47.60 CHF
3x	25mm	S1.7B0.00.0FL.FK		
3x	31mm	S1.7B0.00.0FO.FK		



R-Motion 40 – 40/.04			PCO Price	Recommended Retail Price
3x	21mm	S1.7B0.00.0FJ.FK	23.80 CHF	47.60 CHF
3x	25mm	S1.7B0.00.0FM.FK		
3x	31mm	S1.7B0.00.0FP.FK		



R-Motion 50 – 50/.04			PCO Price	Recommended Retail Price
3x	21mm	S1.7B0.00.0FK.FK	23.80 CHF	47.60 CHF
3x	25mm	S1.7B0.00.0FN.FK		
3x	31mm	S1.7B0.00.0FQ.FK		



R-Motion®

REGULATORY INFORMATION

R-Motion® – Regulatory information

Product		Storage conditions			Classification		Customs information		Other legal information and documents						
Ref.	Description	Shelf Life	Storage Temp.	Flammable (yes /no)	CE Class	GMDN code	HS Code	Country of origin	Legal manufacturer	EC Representative	IFU	MSDS	ISO 13485 Certificate #	CE certificate #	CE declaration of conformity
S1.7B0.00.0GM.FK	R-Motion Glider, 21mm	1 to 5years	NA	no	Ila	40529	9018.4900	Switzerland	FKG Dentaire Sàrl	NA	99.7AA.10.21A.XX	NA	CH07/1081	CH19/0967	DoC rev. 23
S1.7B0.00.0GN.FK	R-Motion Glider, 25mm	1 to 5years	NA	no	Ila	40529	9018.4900	Switzerland	FKG Dentaire Sàrl	NA	99.7AA.10.21A.XX	NA	CH07/1081	CH19/0967	DoC rev. 23
S1.7B0.00.0GO.FK	R-Motion Glider, 31mm	1 to 5years	NA	no	Ila	40529	9018.4900	Switzerland	FKG Dentaire Sàrl	NA	99.7AA.10.21A.XX	NA	CH07/1081	CH19/0967	DoC rev. 23
S1.7B0.00.0HT.FK	R-Motion Glider C, 21 mm	1 to 5years	NA	no	Ila	40529	9018.4900	Switzerland	FKG Dentaire Sàrl	NA	99.7AA.10.21A.XX	NA	CH07/1081	CH19/0967	DoC rev. 23
S1.7B0.00.0HU.FK	R-Motion Glider C, 25 mm	1 to 5years	NA	no	Ila	40529	9018.4900	Switzerland	FKG Dentaire Sàrl	NA	99.7AA.10.21A.XX	NA	CH07/1081	CH19/0967	DoC rev. 23
S1.7B0.00.0HV.FK	R-Motion Glider C, 31 mm	1 to 5years	NA	no	Ila	40529	9018.4900	Switzerland	FKG Dentaire Sàrl	NA	99.7AA.10.21A.XX	NA	CH07/1081	CH19/0967	DoC rev. 23
S1.7B0.00.0HQ.FK	R-Motion 20, 21 mm	1 to 5years	NA	no	Ila	40529	9018.4900	Switzerland	FKG Dentaire Sàrl	NA	99.7AA.10.21A.XX	NA	CH07/1081	CH19/0967	DoC rev. 23
S1.7B0.00.0HR.FK	R-Motion 20, 25 mm	1 to 5years	NA	no	Ila	40529	9018.4900	Switzerland	FKG Dentaire Sàrl	NA	99.7AA.10.21A.XX	NA	CH07/1081	CH19/0967	DoC rev. 23
S1.7B0.00.0HS.FK	R-Motion 20, 31 mm	1 to 5years	NA	no	Ila	40529	9018.4900	Switzerland	FKG Dentaire Sàrl	NA	99.7AA.10.21A.XX	NA	CH07/1081	CH19/0967	DoC rev. 23
S1.7B0.00.0FR.FK	R-Motion 25, 21 mm	1 to 5years	NA	no	Ila	40529	9018.4900	Switzerland	FKG Dentaire Sàrl	NA	99.7AA.10.21A.XX	NA	CH07/1081	CH19/0967	DoC rev. 23
S1.7B0.00.0FS.FK	R-Motion 25, 25 mm	1 to 5years	NA	no	Ila	40529	9018.4900	Switzerland	FKG Dentaire Sàrl	NA	99.7AA.10.21A.XX	NA	CH07/1081	CH19/0967	DoC rev. 23
S1.7B0.00.0FT.FK	R-Motion 25, 31 mm	1 to 5years	NA	no	Ila	40529	9018.4900	Switzerland	FKG Dentaire Sàrl	NA	99.7AA.10.21A.XX	NA	CH07/1081	CH19/0967	DoC rev. 23
S1.7B0.00.0FI.FK	R-Motion 30, 21 mm	1 to 5years	NA	no	Ila	40529	9018.4900	Switzerland	FKG Dentaire Sàrl	NA	99.7AA.10.21A.XX	NA	CH07/1081	CH19/0967	DoC rev. 23
S1.7B0.00.0FL.FK	R-Motion 30, 25 mm	1 to 5years	NA	no	Ila	40529	9018.4900	Switzerland	FKG Dentaire Sàrl	NA	99.7AA.10.21A.XX	NA	CH07/1081	CH19/0967	DoC rev. 23
S1.7B0.00.0FO.FK	R-Motion 30, 31 mm	1 to 5years	NA	no	Ila	40529	9018.4900	Switzerland	FKG Dentaire Sàrl	NA	99.7AA.10.21A.XX	NA	CH07/1081	CH19/0967	DoC rev. 23
S1.7B0.00.0FJ.FK	R-Motion 40, 21 mm	1 to 5years	NA	no	Ila	40529	9018.4900	Switzerland	FKG Dentaire Sàrl	NA	99.7AA.10.21A.XX	NA	CH07/1081	CH19/0967	DoC rev. 23
S1.7B0.00.0FM.FK	R-Motion 40, 25 mm	1 to 5years	NA	no	Ila	40529	9018.4900	Switzerland	FKG Dentaire Sàrl	NA	99.7AA.10.21A.XX	NA	CH07/1081	CH19/0967	DoC rev. 23
S1.7B0.00.0FP.FK	R-Motion 40, 31 mm	1 to 5years	NA	no	Ila	40529	9018.4900	Switzerland	FKG Dentaire Sàrl	NA	99.7AA.10.21A.XX	NA	CH07/1081	CH19/0967	DoC rev. 23
S1.7B0.00.0FK.FK	R-Motion 50, 21 mm	1 to 5years	NA	no	Ila	40529	9018.4900	Switzerland	FKG Dentaire Sàrl	NA	99.7AA.10.21A.XX	NA	CH07/1081	CH19/0967	DoC rev. 23
S1.7B0.00.0FN.FK	R-Motion 50, 25 mm	1 to 5years	NA	no	Ila	40529	9018.4900	Switzerland	FKG Dentaire Sàrl	NA	99.7AA.10.21A.XX	NA	CH07/1081	CH19/0967	DoC rev. 23
S1.7B0.00.0FQ.FK	R-Motion 50, 31 mm	1 to 5years	NA	no	Ila	40529	9018.4900	Switzerland	FKG Dentaire Sàrl	NA	99.7AA.10.21A.XX	NA	CH07/1081	CH19/0967	DoC rev. 23
99.700.80.S02.FK	Promo Set R-Motion	1 to 5years	NA	no	Ila	40529	9018.4900	Switzerland	FKG Dentaire Sàrl	NA	99.7AA.10.21A.XX	NA	CH07/1081	CH19/0967	DoC rev. 23



R-Motion®

Legal documents



ISO 13485 Certificate



CE Certificate



Declaration of conformity



FKG

**EMPOWER
ENDO**

