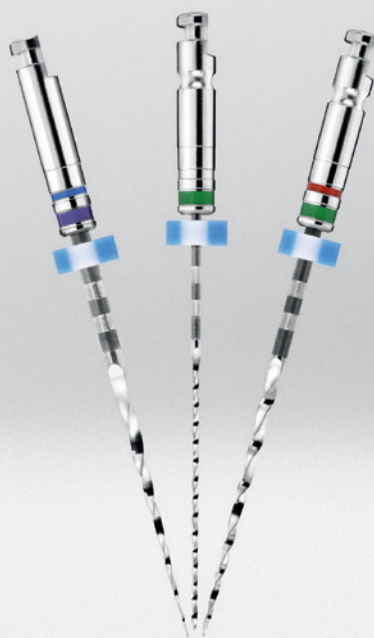




FKG
swiss endo



New

BT-Race
Biological and conservative

► The BT-Race Sequence

This sequence enables treatment of a majority of canals with just three instruments, in compliance with established biological standards, and all without compromising safety.

FKG's sequence is sterile-packed in a cleanroom environment. As they are single-use tools, cross-contamination is prevented and the stress on instruments is reduced. The goal is endodontic excellence, and with the sequence's ease of use, economical price and its efficiency, it is a real step forward – benefitting dentists, endodontists and patients alike.

► Exclusive advantages

Race is a family of instruments with well-known advantages – its non screwing in design, its electropolished finish, its safety tip, as well as its optimised cut that removes debris excellently.

The new **BT-Race** sequence is suitable for all types of canals and allows an unparalleled ease of use thanks to the technology perfected and patented by FKG. Further exclusive advantages include:



Sterile

- ▶ The practitioner can start the procedure without delay
- ▶ Associated costs are reduced (such as storage and handling)
- ▶ Instrument use is guaranteed to be totally hygienic

Single-use instruments

- ▶ Patient cross-contamination is prevented
- ▶ Few instruments, the practitioner follows a simplified workflow, which gains time and benefits the patient too
- ▶ The instruments are subjected to less stress, reducing risk of breakage
- ▶ Cleaning and maintenance of instruments are things of the past

Adhere to biological standards

- ▶ Little vibration and constraints on the dentine at 800 rpm. This ensures easy progression and minimises the risk of micro-cracks
- ▶ Minimal weakening of the coronal part and the root of the tooth thanks to the low taper (maximum .04)
- ▶ The design of the Booster Tip (BT) and the safety tip ensure the canal anatomy is respected
- ▶ Biological preparation to guarantee a sufficient cleaning of the apical
- ▶ Outstanding removal of debris

► The BT-Race Sequence

BT-Race: 3 sterile single-use instruments

The BT-Race Sequence is suitable for all types of canal. It ensures a finish of ISO 35/.04 in diameter:



BT1, 10/.06: finalisation of glide path, canal exploration, conservative enlargement of the coronal third. Small diameter, high taper clears the coronal part.



BT2, 35: preparation of the apical third. Patented file and tip; In spite of ISO 35 diameter, file remains flexible thanks to the non taper; easy penetration thanks to the BT tip.



BT3, 35/.04: final shaping for the most common canals. Advantages of the non screwing in design patent; excellent cutting capacity, debris transported from canal, easy penetration thanks to the BT tip.

Packaging: in a sterile blister pack, 6 instruments, for 2 sequences of 3 instruments

Single-use: the sequence is designed for one use on one patient only (for a maximum of one molar with 4 canals).

BT-Race XL: complementary, single-use, sterile instruments

These 2 instruments enable finishes at ISO 40 and 50:



BT 40, 40/.04: final shaping for large canals. Easy penetration thanks to the BT tip.



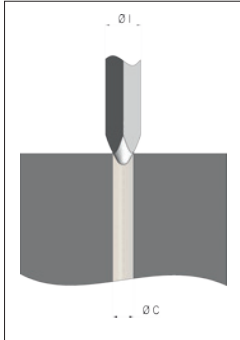
BT 50, 50/.04: final shaping for larger canals. Easy penetration thanks to the BT tip.

For a finish larger than ISO 50, the Race range of instruments is available, up to the required size.

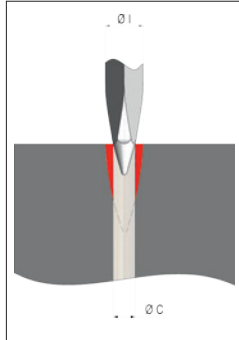
Packaging: 6 identical instruments are available in a sterile blister pack.

Single-use: the instruments may be used once, on one patient only (to treat a maximum of one molar with 4 canals).

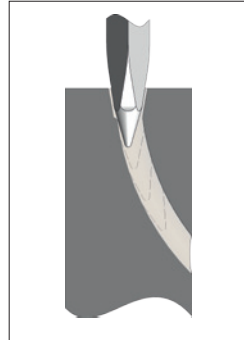
► The BT tip specifics (Booster Tip and Biological Treatment)



1. Tip in a canal



2. BT tip in the same canal

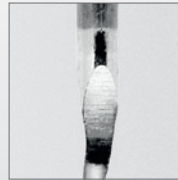


3. Path of the safety tip, with guide

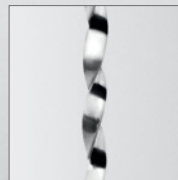
1. In this case, the diameter «I» file cannot progress in the canal. It would be necessary to use firstly a smaller size file or one equal to C.
 2. In this case, thanks to the BT tip, the diameter «I» file can progress in diameter C canal.
- Removes an increased amount of material with each cut and enables thus a faster progression through the canal, whilst respecting its anatomy and shape
 - Double cutting edges at the tip, for increased cutting efficiency
 - Revolutionary shape enables the use of fewer instruments per treatment

► The specifics of BT2

- Secures the Apex at ISO 35, ensuring that all instruments that follow are not blocked
- No taper, the file remains very flexible and can therefore operate in any type of curvature
- Thanks to the BT tip and safety tip, the file follows the canal without problems
- Breaking point located 16mm from the tip to avoid all risk of breaks at the tip



Breaking point



Cylindrical instrument



BT tip

► Protocol BT-Race

For most cases

Speed : 800 rpm (600-1000 rpm)

1. After the coronal access is attained, the working length should be obtained with small hand files (ISO 06, 08, 10 or 15) depending the constriction of each canal.
2. A glide path should be performed with small stainless steel or NiTi files up to ISO 15 before using BT-Race sequence.
3. Files of the entire sequence should be used to full WL before changing to the next file in the sequence. Per file, total working time in one canal should not exceed 10 seconds.
4. Use the BT1 with a long and gentle pecking motion (3-4 back and forth strokes). If BT1 does not reach WL, clean the instrument, irrigate and repeat until the WL is achieved.
5. Recapitulate with K-File ISO 15 to remove the debris and keep the glide path open, irrigate.
6. Use BT2 up to WL in the same manner as BT1.
7. Recapitulate with K-File ISO 15, irrigate.
8. Use BT3 up to WL in the same way as BT1.

BT-Race protocol illustrations



ISO 15/.02

Point 2



BT1, 10/.06

Point 4



BT2, 35

Point 6



BT3, 35/.04

Point 8

► Protocol BT-Race XL

For larger apical sizes
Speed : 800 rpm (600-800 rpm)

- BT3 is used for minimal biological apical preparation.
- For larger apical preparations use BT40 or BT50.

► Golden rules

Recommended speed: 800 rpm
Torque: 1.5 Ncm

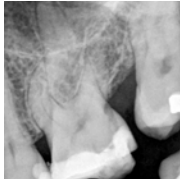
- Glide path should be established before using BT-Race sequence (minimal size ISO 15/.02).
- All files should be used with long and gentle pecking motion (3-4 back and forth gentle strokes).
- Copious irrigation throughout the procedure.

► References

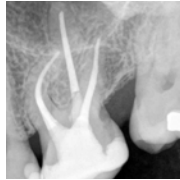
	21 mm	25 mm	31 mm
BT-Race Sequence	S1.7B0.00.SCN.FK	S1.7B0.00.SCO.FK	S1.7B0.00.SCP.FK
BT-Race 40	S1.7B0.00.0FC.FK	S1.7B0.00.0FD.FK	S1.7B0.00.0FE.FK
BT-Race 50	S1.7B0.00.0FF.FK	S1.7B0.00.0FG.FK	S1.7B0.00.0FH.FK

► Clinical cases

Case 1

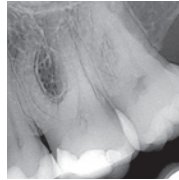


Symptomatic
Pulpitis



MB1 & MB2: BT3;
DB: BT40; P: BT50

Case 2

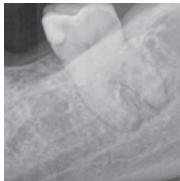


Symptomatic
Pulpitis



MB1 & MB2: BT3
DB: BT40; P: BT50

Case 3



Irreversible
Pulpitis



MB & ML: BT3
D: BT50

Case 4



Irreversible
Pulpitis



MB1 & MB2: BT3
DB: BT40; P: BT50

Cases 1 and 2: Courtesy of Dr. Gilberto Debelian (Norway)

Cases 3 and 4: Courtesy of Dr. Martin Trope (USA)



FKG Dentaire SA

Founded in 1931, FKG Dentaire SA is today at the very cutting edge of development, production and distribution of dental products for dentists, endodontists and laboratories. Precision has always been central to FKG, and the company naturally made its base in «Watch Valley,» home to most Swiss watchmaking and microtechnical companies.

FKG was given a new lease of life in 1994, when Jean-Claude Rouiller took up the reins. A CEO with a vision, he set out a strategy based on innovative products and the concept of machinery specially manufactured for the dental industry. Mr Rouiller also enlarged the distribution network to encompass more than 80 countries worldwide. FKG products are certified according to international norms and standards.

The Swiss Venture Club named FKG «Western Switzerland Company of the Year 2012», a reward for the company's dynamism, high product quality, and its continuing innovation.

**«Western
Switzerland
Company of
the Year 2012»**



FKG Dentaire SA
Crêt-du-Loche 4
CH-2304 La Chaux-de-Fonds
Switzerland
T +41 32 924 22 44
F +41 32 924 22 55

info@fkg.ch
www.fkg.ch

